

Philadelphia Logistics Center

New 207,500 square foot
state-of-the-art logistics
center with strategic
Philadelphia location

3025 Meeting House Rd
Philadelphia, PA 19154



- New construction in master planned industrial park
- Available for occupancy Q3, 2019
- Up to 207,500 s.f. available, divisible to 50,000 s.f.
- Ideal supply chain location in NE Philadelphia
- Easy access to I-276, I-95, and Route 1
- Ceiling height: 32' clear
- Column spacing: 50' x 54', 60' x 54' at staging bays
- Car parking: 1.17/1,000 ratio (242 spaces)





Full building specifications:

Ceiling height: 32' clear

Column spacing: 50' x 54', 60' x 54' at staging bays

Car parking: 1.17/1,000 ratio (242 spaces)

Truck court: 194' including 60' concrete apron

Loading: Forty Seven (47) insulated 9' X 10' overhead doors, two (2) 12' x 14' insulated drive-in doors

Trailer storage: 51 Trailer Parking spaces

Fire protection: ESFR Sprinkler System

Exterior wall: Load bearing pre-cast walls with a smooth finish

Loading format: Single - Side

Floor slab: 4,000-PSI concrete, minimum of 6 inch thickness

Roof system: Single-ply 40 mil TPO membrane mechanically attached.

Power: 2,000 AMP, 277/480 volt, 3 phase service, 4 wire

Utilities: Electric, gas, telephone conduits, sewer and water service.

Elevations



North elevation

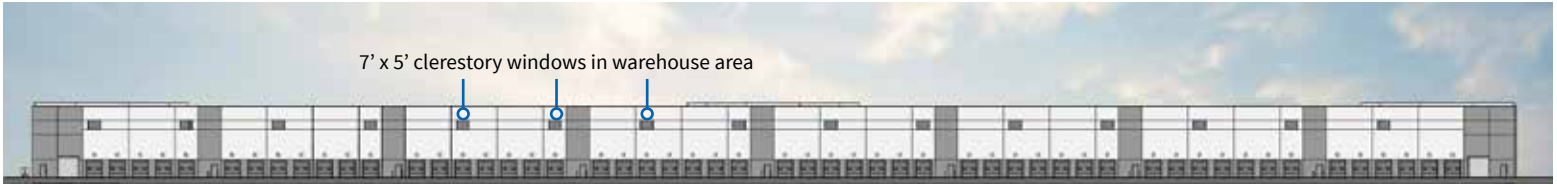
Tilt concrete panels



West elevation

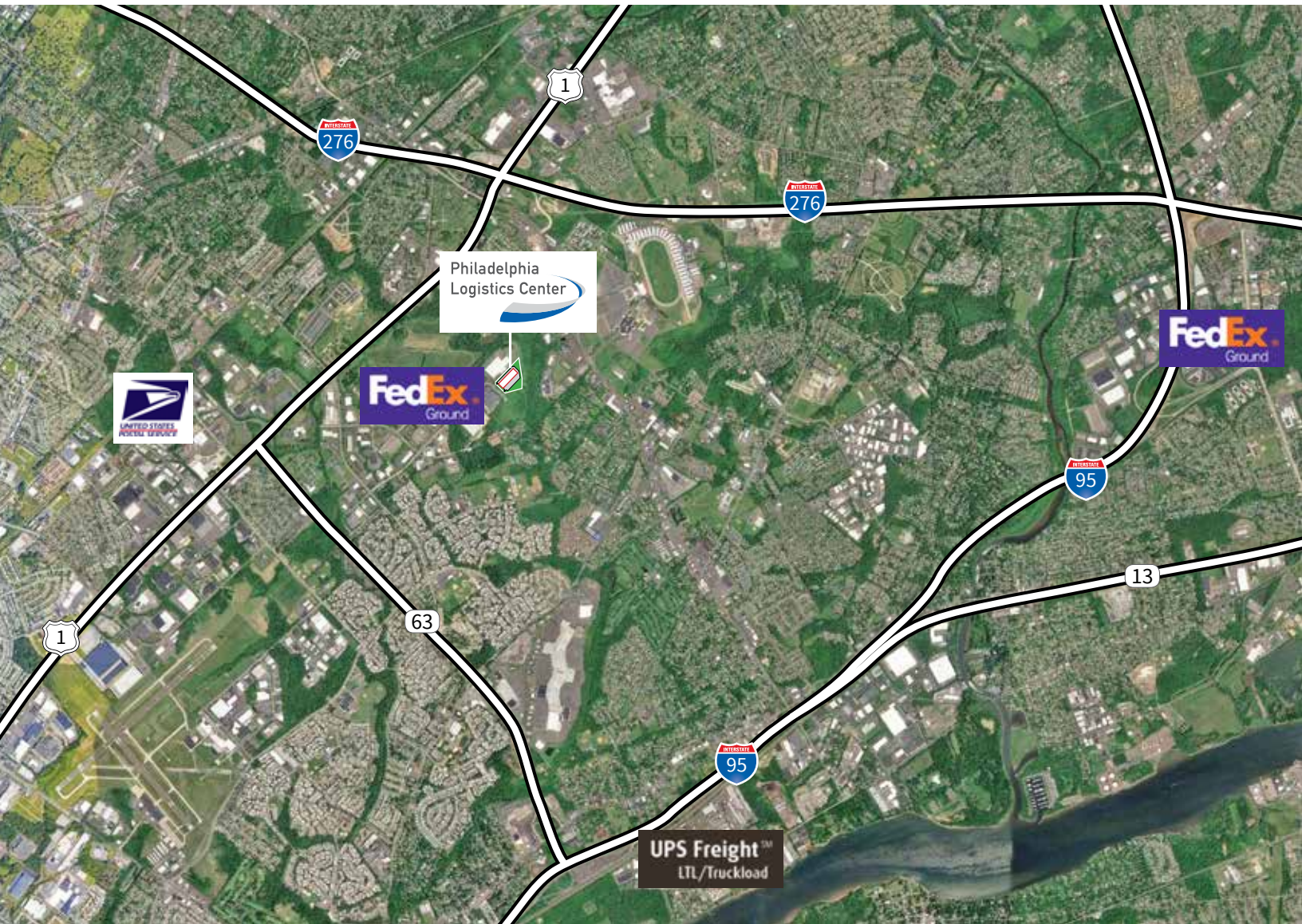


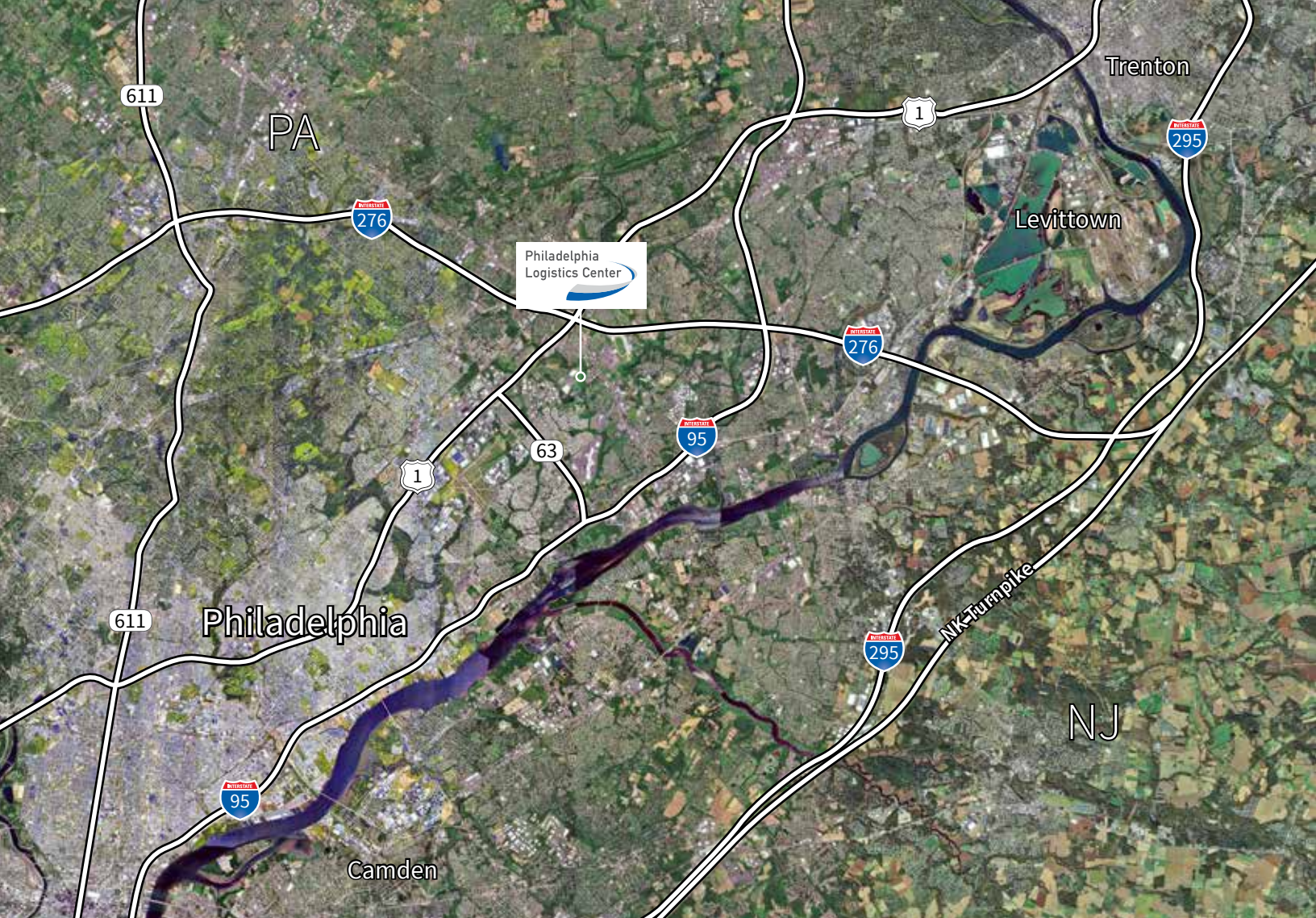
East elevation



South elevation

Location highlights





Demographics: 3 mile population: **112K** 5 mile population: **282K** 30 mile population: **5.2M**

Strategic logistics location with ideal access to key mid-Atlantic locations

- **2 miles** to I-276/Route 1 exchange
- **4 miles** to I-95
- **7 highway entrances** within ten miles
- **15 miles** to New Jersey Turnpike
- **27 miles** to Philadelphia International Airport
- **74 miles** to Port of Newark

For leasing information:

Brian McCurdy
+1 215 399 1835
brian.mccurdy@am.jll.com

Brad Boone
+1 215 988 5517
brad.boone@am.jll.com

JLL | Jones Lang LaSalle
1650 Arch Street, Suite 2500
Philadelphia PA 19103
+1 215 988 5500

Although information has been obtained from sources deemed reliable, Owner, Jones Lang LaSalle, and/or their representatives, brokers or agents make no guarantees as to the accuracy of the information contained herein, and offer the Property without express or implied warranties of any kind. The Property may be withdrawn without notice. ©2018. Jones Lang LaSalle. All rights reserved.

