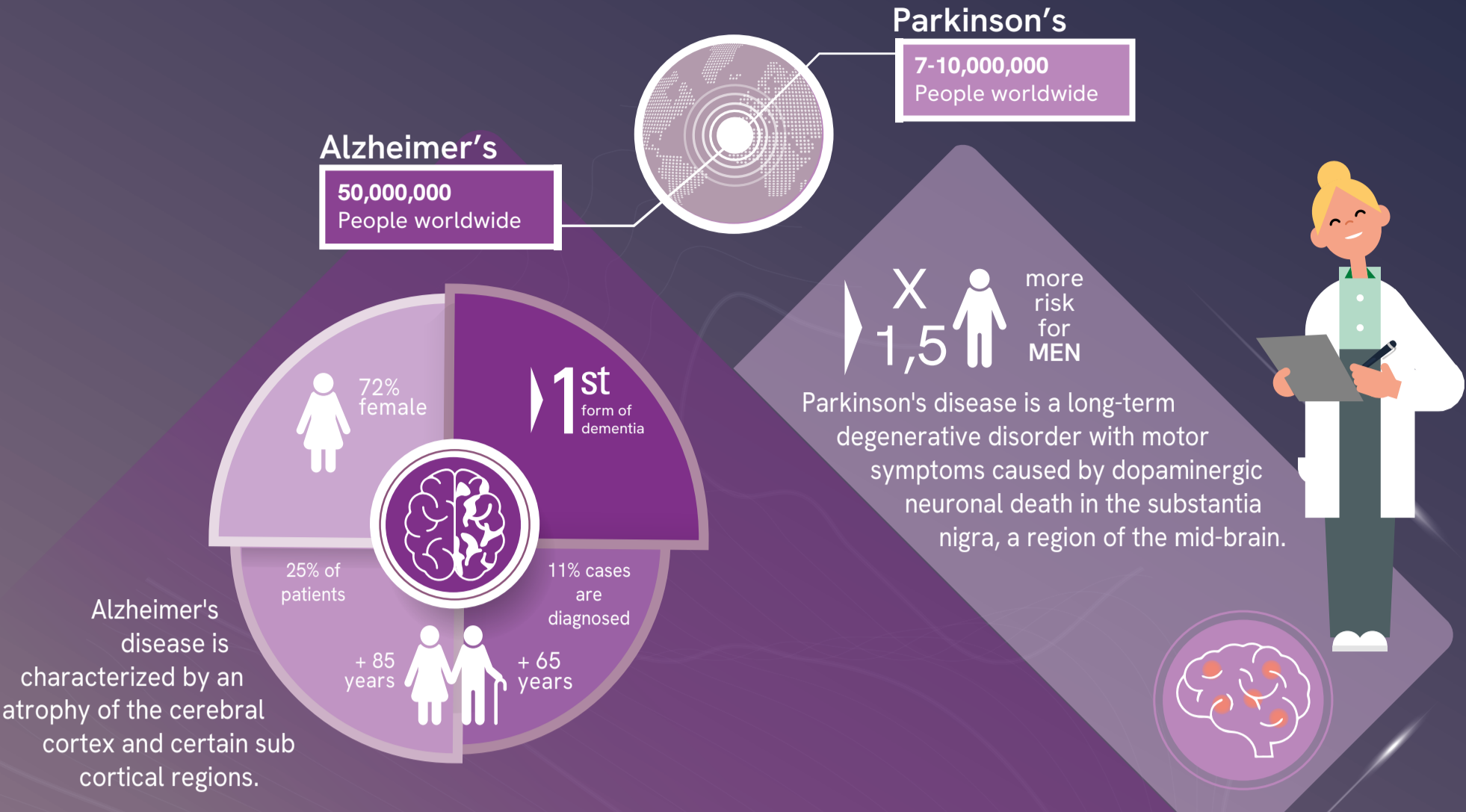


Neurodegeneration

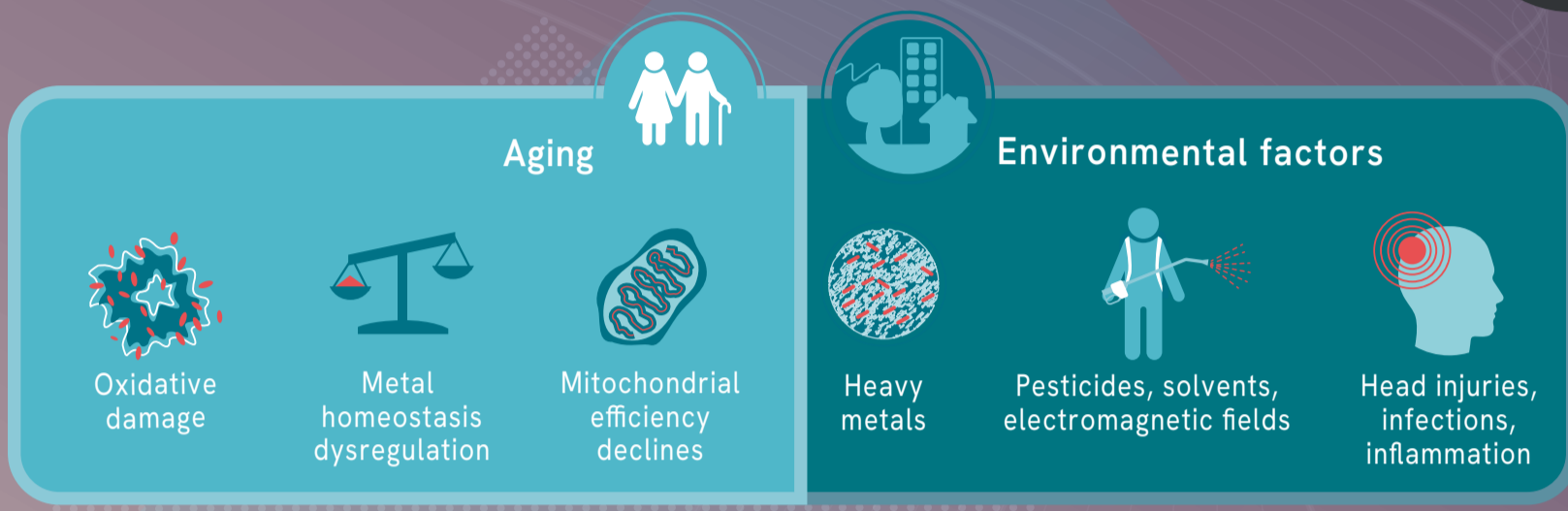
And its main related diseases



Key facts on diseases

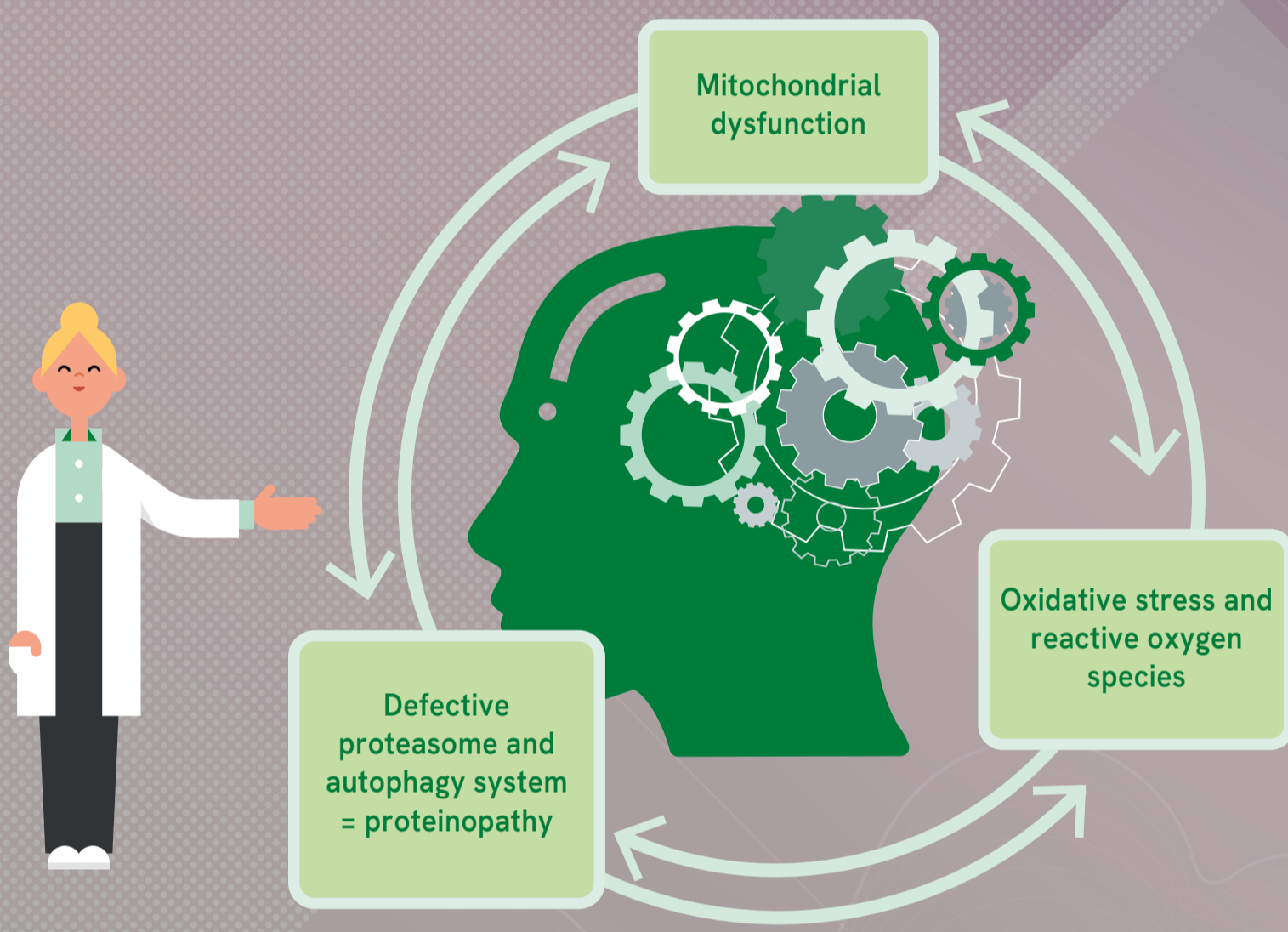


Risk factors

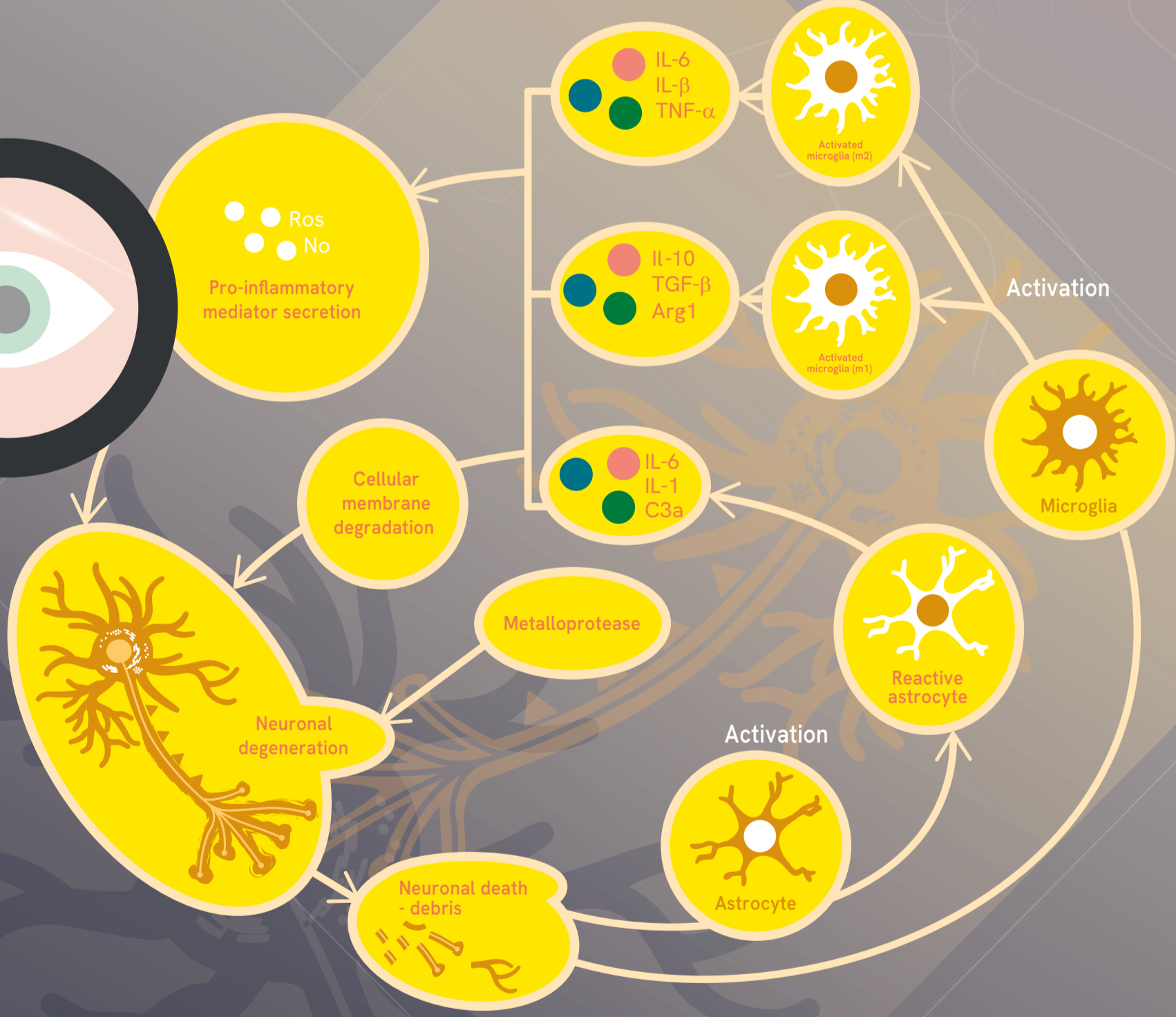


Molecular progression

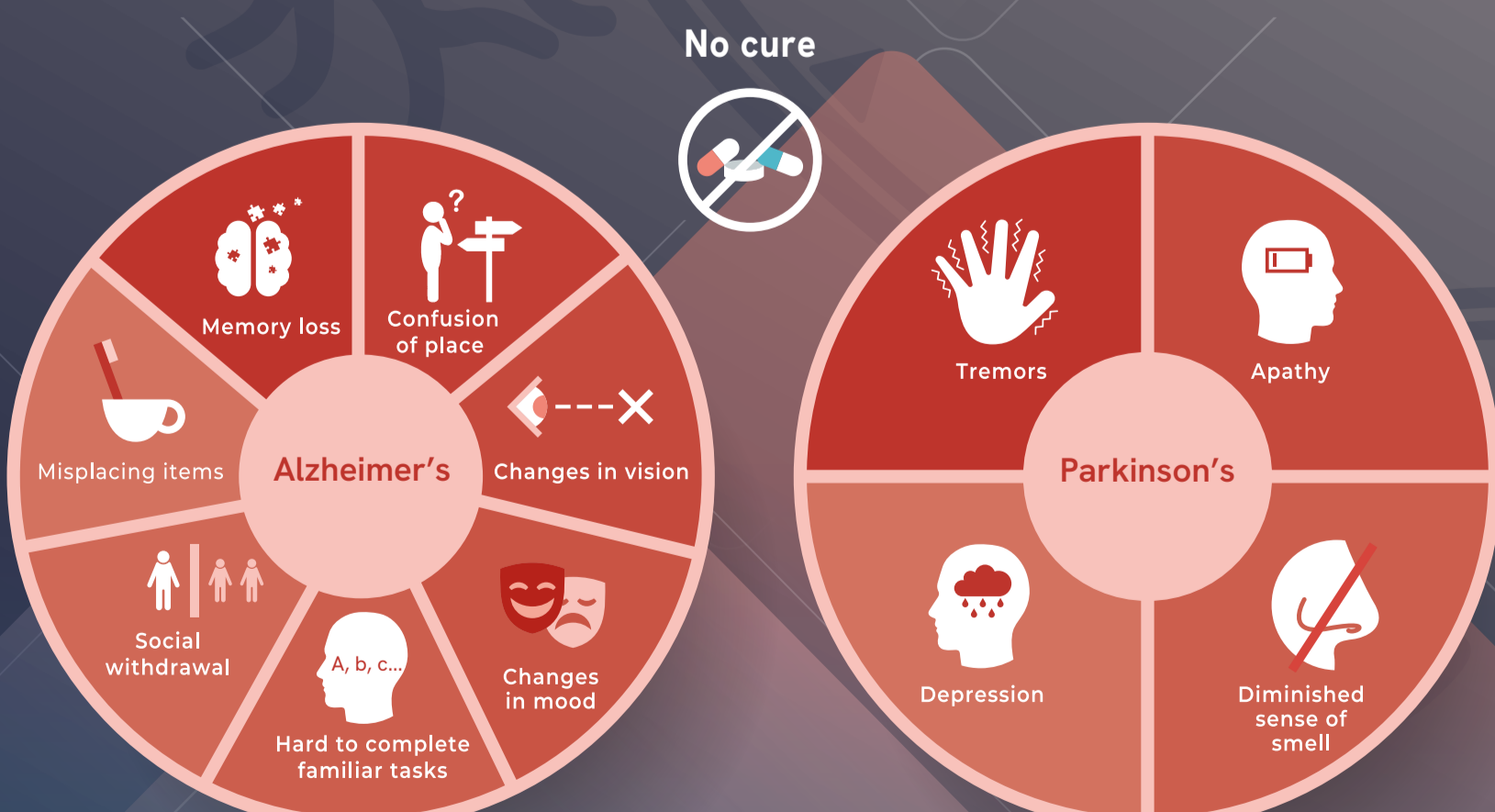
AD and PD progression is characterized by an abnormal accumulation of damaged proteins leading to cumulated dysfunctions, as detailed in this diagram



Cellular types involved



Symptoms and consequences



References

- Masters cl, bateman r, blennow k, rowe cc, sperling ra, cummings jl. Alzheimer's disease. Nature reviews. Disease primers 2015;1:15056
- Poewe w, seppi k, tanner cm, halliday gm, brundin p, volkmann j et al. Parkinson disease. Nature reviews. Disease primers 2017;3:17013.
- Subramanyam cs, wang c, hu q, dheen st. Microglia-mediated neuroinflammation in neurodegenerative diseases. Seminars in cell & developmental biology 2019.